

## Semi-scissor platform lift

### HDS25 Single

article no.: HDS25xxxxxF02

Length	Article no.
6,5 m	HDS2506500F02
8,0 m	HDS2508000F02
9,0 m	HDS2509000F02
Length	Article no.
10,0 m	HDS2510000F02
12,0 m	HDS2512000F02
14,5 m	HDS2514500F02

The HDS25 heavy duty semi-scissor lift with a capacity of 25 t is available with different platform lengths from 6.5 m up to 14.5 m. This platform lift is suitable for a multitude of commercial vehicles and has been approved in many different applications so far. The recessed version of the lowered lift is level with the floor and can be crossed over with vehicles. The floor version does not require any constructional measures and can be quickly installed anywhere. In all cases, you remain flexible and make optimum use of your workshop surface.

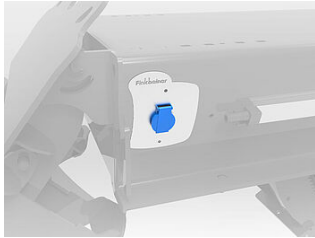


### specifications

<b>article no.</b>		HDS25xxxxF02
<b>load support</b>	load support	platforms
	capacity	25 t
	quantity of platforms	2
	width of platforms (mm)	750 mm
	height of platforms (mm)	360 mm
	distance between platforms	1100 mm
	platform surface	smooth metal sheet
<b>height</b>	lifting stroke effective	1780 mm
	lifting height / floor version	2140 mm
	lifting height / recessed version	1780 mm
<b>speed</b>	lifting time	90 sec.
<b>drive</b>	mode of drive	electro-hydraulic
	motor	AC voltage
	motor power (kW)	8.8 kW
<b>power supply</b>	type of power supply	mains supply
	electrical connection	400V/3Ph+N+PE/50Hz
	compressed air connection	6 bar
	fuse (Amps)	32 A
<b>operation</b>	mode of operation	1 central control unit
	control	electronic
	Softstart	yes
<b>regularisation</b>	synchronisation	proportional valves, infinitely variable
<b>load securing</b>	load securing	hydraulic and mechanical
<b>protection class</b>		IP65
<b>floor load</b>	quality of foundation	C20/25
<b>surface treatment</b>	type of surface treatment	powder coating
	colour	grey RAL7015



accessories



**HDSF07-ST02**

Electric sockets 230V



**HDSF07-DL02**

Pneumatic sockets



**HDSF07-BL-LEDXX**

Set with 4 to 10 LED lamps



**HDSF07-AS0X**

anti-skid surface anti-skid class R13



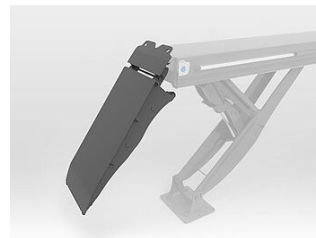
**HDSF0713-235**

2 ascending ramps, 2350 mm



**HDSF0713-330**

2 ascending ramps, 3300 mm



**HDSF0713-180H**

2 ascending ramps, hanging, 1800 mm



**HDSMHFL160-200-F07**

jacking beam 16 t, pneumatic



**HDSF07BA-XXXXX**

floor levelling for pits of platforms



**HDSF07FV-XX**

Galvanizing



**HDSF07DUROPLEX-XX**

Special coating in addition to galvanizing



**HDSF07-SK01**

2. control box in the washing area