



## Mobile column

### **EHB903V11DC-FEX wireless**

article no.: EHB903V11DC01-H-FEX

Mobile column EHB903V11DC-FEX with a capacity of 3 t each for vehicles with inboard wheels such as motorhomes or vehicles with a large superstructure having an axle weight of up to 6 tons. The wheel forks are 500 mm long. Maximum 10 columns can be composed to operate as a lift set:

- set of 4 columns consisting of 4 identical columns: 4 x EHB903V11DC01-H-FEX (4 x 3 t = 12 t)
- set of 6 columns consisting of 6 identical columns: 6 x EHB903V11DC01-H-FEX (6 x 3 t = 18 t)

**specifications**

<b>article no.</b>		EHB903V11DC01-H-FEX
<b>lifting unit</b>	type of columns	all columns identical
	quantity of columns	1
	quantity of columns, maximum	10
<b>load support</b>	load support	adjustable wheel fork
	capacity per column	3 t
	wheel size Ø minimum (mm)	550 mm
	wheel size Ø maximum (mm)	1140 mm
	length of fork (mm)	500 mm
<b>height</b>	lifting stroke effective	1750 mm
	lifting height	1850 mm
	frame height at front (mm)	100 mm
<b>speed</b>	lifting time	55 sec.
	lowering time (under load)	55 sec.
<b>drive</b>	mode of drive	electro-hydraulic
	motor	DC voltage
	motor power per column (kW)	2.2 KW
<b>power supply</b>	type of power supply	battery-powered
	type of battery	deep cycle, maintenance-free
	battery capacity per column	80 Ah
	lift cycles at full load	40
	fuse, per column (Amps)	2.5 A
	total battery voltage	24 V
	length of charging cable	10 m
	charging concept	EasyCharge
	charging voltage	230 V
	frequency of power supply	50 Hz
<b>communication</b>	charging time	8 h
	communication via radio, wireless	
<b>operation</b>	mode of operation	operation at each column
	activation	all, individual, axle-wise, group mode
	control	electronic
	Softstart	yes
<b>regularisation</b>	synchronisation	proportional valves, infinitely variable
<b>travelling device</b>	travelling device	at each column
	travelling device at front	2 front wheels, fixed
	travelling device at rear	1 wheel handle, spring-loaded, self-lowering under load
	ground clearance at front	15 mm
	ground clearance at rear	35 mm
<b>load securing</b>	load securing	hydraulic and mechanical
<b>dimensions</b>	length	1350 mm
	width	1165 mm
	height	2255 mm
	height of fork (mm)	100 mm



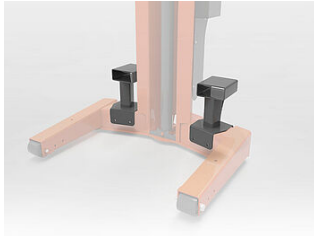
**Mobile column**  
**EHB903V11DC-FEX wireless**

**PAGE 3/4**

<b>weight</b>	weight per column (kgs)	575 kg
<b>protection class</b>		IP54
<b>surface treatment</b>	type of surface treatment	powder coating
	colour	orange RAL2004 / grey RAL7015

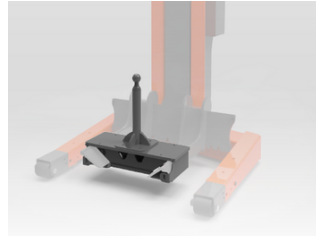


**accessories**



**EHB907FLP**

Forklift pockets



**EHB907BCS**

Support for ball coupling



**EHB905TR113000**

Crossbeam, 11 t, length 3000 mm



**EHB905TR113500**

Crossbeam, 11 t, length 3500 mm



**EHB907-LS-PR503-500**

Load support, pluggable



**EHB907TRT412TR01-500**

Basic cross beam 880 mm, tractor support at front



**EHB907TRT412TR02-500**

Basic cross beam 640 mm tractor support at rear



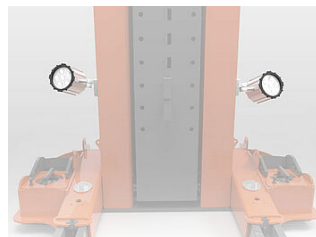
**HS08LR**

support stand, 8.2 t, 1260-1990 mm



**MS08LR**

support stand, 8.2 t, 790-1270 mm



**EHB907SPOT02**

2 LED spots

